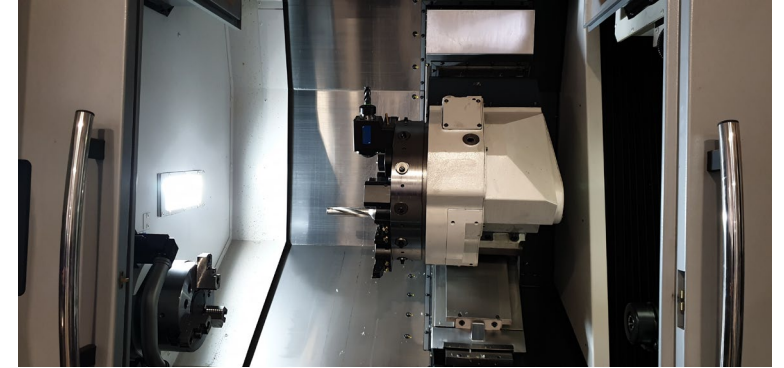
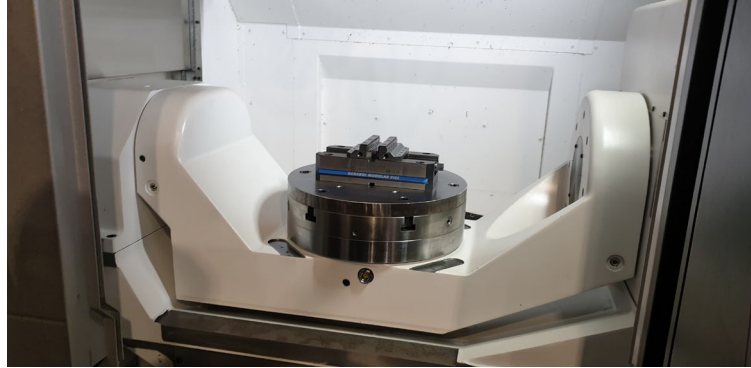




CAD-CAM Engineering

"Always deliver more than expected"

We offers metal working services for prototype, small and serial production for machining parts with very tight tolerances and complexity shape.



CNC milling & turning machining: 3 axis, 4 axis, 5 axis

Materials: Aluminium alloys, Steel, Stainless Steel, Inconel, Titanium

Special processes: anodizing, hard anodizing, chemical polishing, heat treatment, browning treatment

Type of production: small series (10-100pcs), medium (100-5000 pcs.), mass (5000-30000 pcs.)

"Always deliver more than expected"

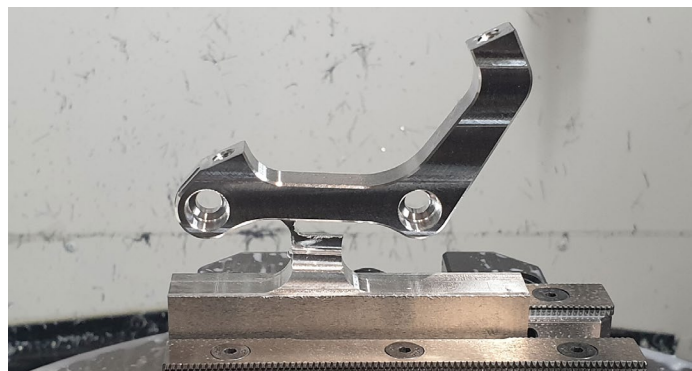
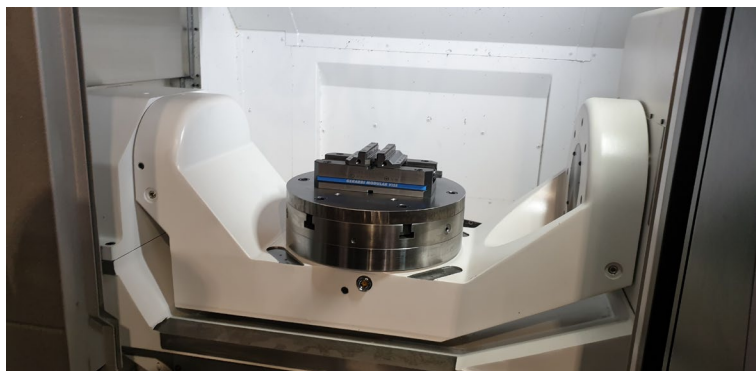
**CNC Milling Machine: 5 axis (X762, Y460, Z460, C360°, A-110°/+20°)
Okuma Genos M460V-5AX**

Max. workpiece: Ø600x400mm

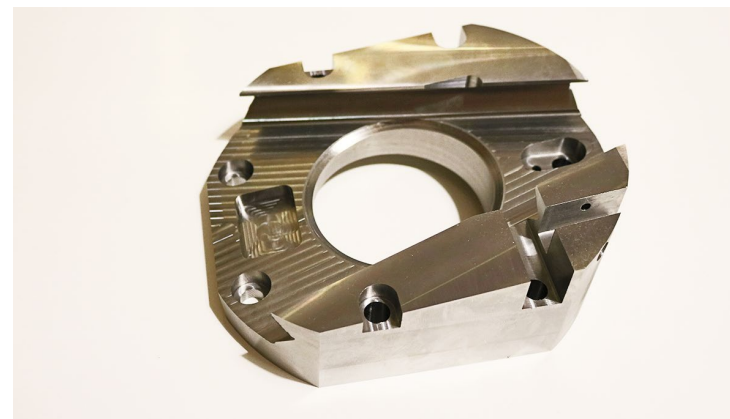
Spindle speed: S15000rpm

Power: 22KW

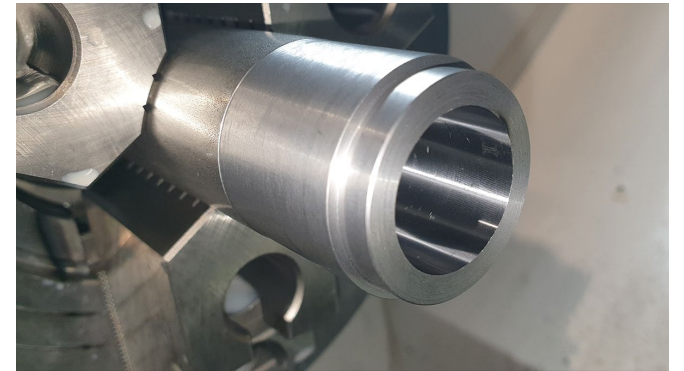
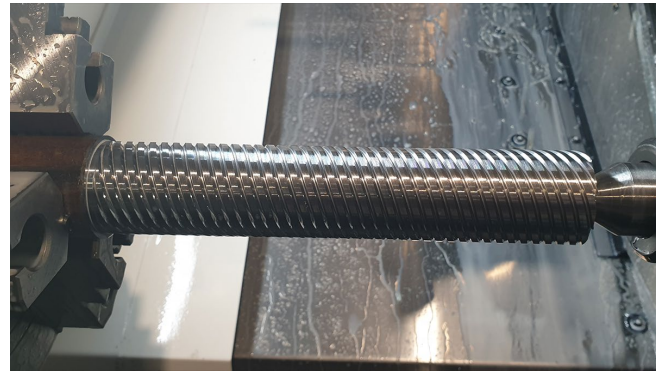
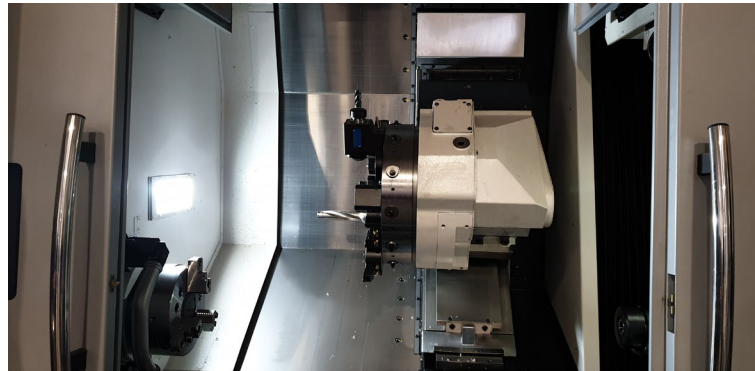
Nr. of tools: 32



Material
EN-AW 7075
AlZnMgCu1.5 T6



Material
42CrMoS4



CNC Turning Machine: 4 axis (X, Y, Z, C) Okuma Genos L300E-MY-0

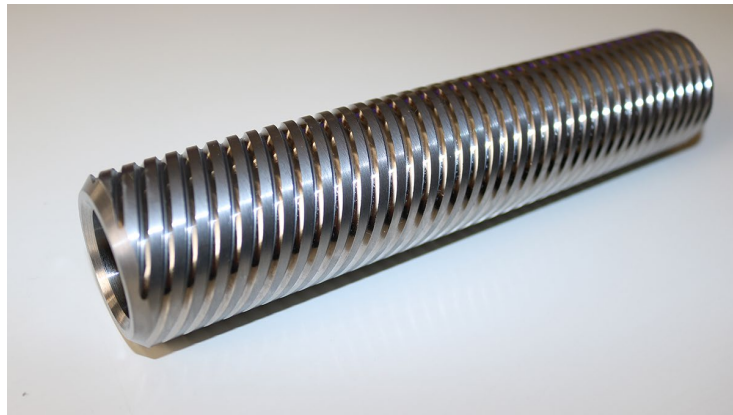
Max. turning workpiece : $\varnothing 340 \times 1020 \text{mm}$

Max. milling workpiece: $\varnothing 340$ -Axial / $\varnothing 160$ -Radial

Speed: S3000-Turning / S4500-Milling

Power: 15KW

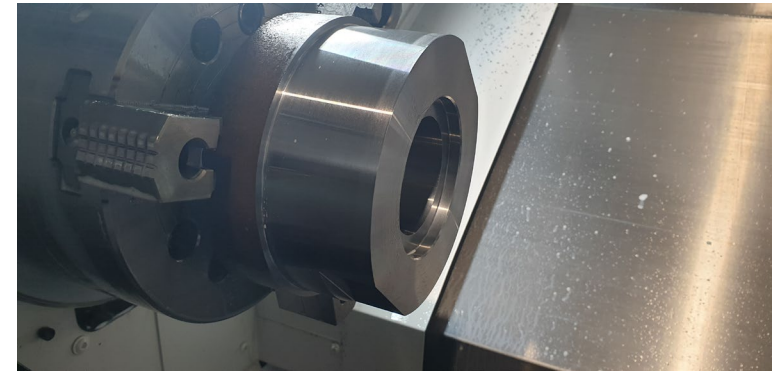
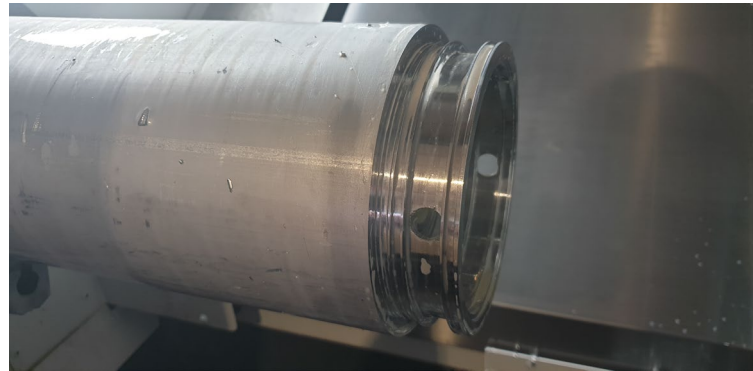
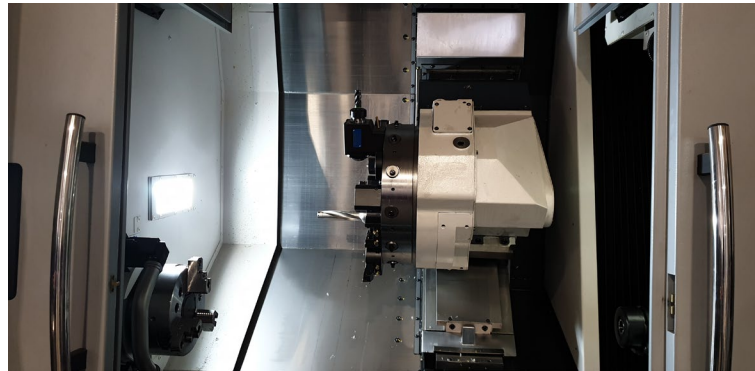
Material
Steel C45



Material
Steel S235



"Always deliver more than expected"



CNC Turning Machine: 4 axis (X, Y, Z, C) Okuma Genos L300E-MY-0

Max. turning workpiece : $\varnothing 340 \times 1020 \text{mm}$

Max. milling workpiece: $\varnothing 340$ -Axial / $\varnothing 160$ -Radial

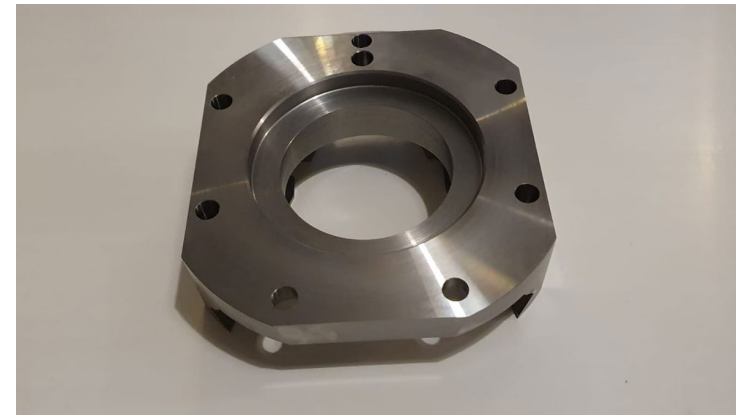
Speed: S3000-Turning / S4500-Milling

Power: 15KW

Material
EN-AW 6082
AlSiMgMn T6



Material
42CrMoS4





CAD-CAM Engineering

"Always deliver more than expected"

Reference Projects

Workpiece: $\varnothing 72 \times 26 \text{mm}$

Material: EN-AW 6082 AlSiMgMn T6

Surface Treatment: Hard Anodizing, color Black



"Always deliver more than expected"

Reference Projects

Workpiece: 36x40x62mm

Material: EN-AW 7075 AlZnMgCu1.5 T6

Surface Treatment: Hard Anodizing, color Black





CAD-CAM Engineering

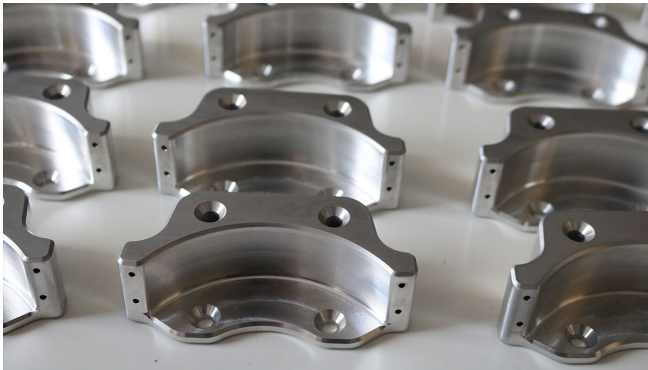
"Always deliver more than expected"

Reference Projects

Workpiece: 28x43x92mm

Material: EN-AW 6082 AlSiMgMn T6

Surface Treatment: Hard Anodizing, color Black





CAD-CAM Engineering

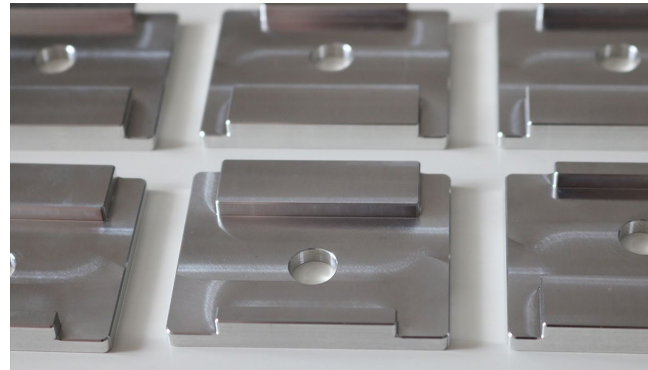
"Always deliver more than expected"

Reference Projects

Workpiece: 28 x 43 x 92mm

Material: EN-AW 5083 AlMg4.5Mn0.7

Surface Treatment: Hard Anodizing, color Black





CAD-CAM Engineering

"Always deliver more than expected"

Software

3D Design: Solidworks 2021

2D Drawings: Solidworks 2021

CNC Programming : Solidcam 2021

